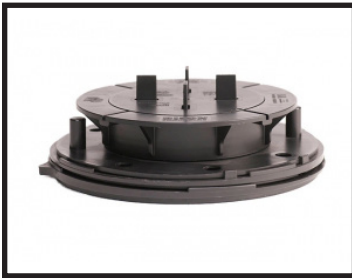


Bison Grating Pedestals



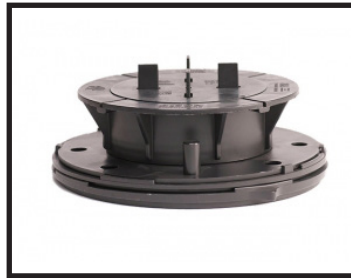
Fibergrate molded grating pedestals have provided an innovative solution to raised flooring needs for decades. Over time, our line of pedestals has expanded to include more options for various molded grating configurations. In addition to our current line of grating pedestals, [Bison Versajust pedestals](#) are now available through Fibergrate. Bison Versajust pedestals provide a wider range of height options for your raised flooring needs.

Versajust Adjustable Pedestal | V1-18



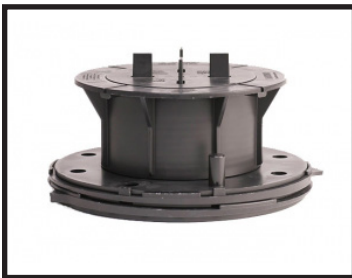
PN# BIP100005
Description
Adjustable Pedestal 1/8" Tab Size
Height Range
2-1/4" to 2-3/4"
Max Height
2-3/4"

Versajust Adjustable Pedestal | V2-18



PN# BIP100016
Description
Adjustable Pedestal 1/8" Tab Size
Height Range
2-3/4" to 3-3/4"
Max Height
3-3/4"

Versajust Adjustable Pedestal | V3-18



PN# BIP100027
Description
Adjustable Pedestal 1/8" Tab Size
Height Range
3-3/4" to 5-3/4"
Max Height
5-3/4"

Versajust Adjustable Pedestal | V4-18



PN# BIP100038
Description
Adjustable Pedestal 1/8" Tab Size
Height Range
5-3/4" to 9"
Max Height
9"

Quick Clip Extender – Adds up to 4 inches | VC2



PN# BIP100048
Description
Quick Clip Extender
Height Range
Insert VC2 into V4 Base or other VC2s; adds 4" each
Max Height
Utilize up to 4 VC2's to reach 24"
Must use Bison Brace for >24" pedestal height.

Ultra Low Height Pedestal | VT18



PN# BIP100052
Description
Use for Ultra Low Height Pedestal 1/8" Tab Size
Height Range
1/8"
Max Height
1/8"

Fixed Height Stackable Pedestal | HD25-18



PN# BIP500014
Description
Fixed Height Stackable Pedestals
1/8" Tab Size
Height Range
1/4"
Max Height
Stack up to 4

Fixed Height Stackable Pedestal | HD50-18



PN# BIP500018
Description
Fixed Height Stackable Pedestals
1/8" Tab Size
Height Range
1/2"
Max Height
Stack up to 4

Bison Grating Pedestals

Fixed Height Stackable Pedestal | HD75-18



PN# BIP500023

Description

Fixed Height Stackable Pedestals
1/8" Tab Size
Height Range
3/4"
Max Height
Stack up to 4

Low Height Adjustable Pedestal | LO-18

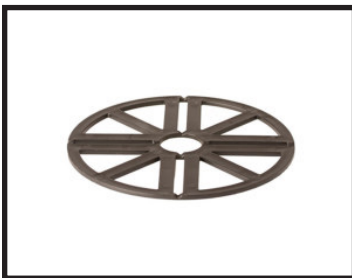


PN# BIP500032

Description

Low Height Adjustable Pedestal
1/8" Tab Size
Height Range
1-1/4" to 2"
Max Height
2"

Plastic Shim | PS1



PN# BIP500046

Description

Rigid Shim
Height Range
1/8"
Max Height
1/8"

Bison Brace Collar | BB-C



PN# BIP100001

Description

Works with V Series Pedestals

Bison Brace Kit | BB-BRACE



PN# BIP500002

Description

Brace kit contains 2 brace pieces
and BB-Latch fasteners
Adjustment Range
Fits 11-3/4" to 36" Pedestal
Spacing

PLEASE NOTE:

Please refer to our standard pedestal layouts for traffic up to 100 PSF. If your application requires 200 PSF, please contact your [local Fibergrate territory manager](#).

1/8" tabs should be removed prior to installation of pedestals. Grating should be installed to pedestals using M-Clips and 1/4" self tapping screws. Contact your local Fibergrate territory manager for details.



Phone: 972-250-1633
Fax: 972-250-1530



www.fibergrate.com



info@fibergrate.com

Fibergrate Composite Structures Inc. believes the information contained here to be true and accurate. Fibergrate makes no warranty, expressed or implied based on this literature and assumes no responsibility for consequential or incidental damages in the use of these products and systems described, including any warranty of merchantability or fitness. Information contained here is for evaluation only.
©Fibergrate Inc. 2017-11/13-Bison-Grating-Pedestals.PDF

